

Introducing the newest subminiature snap locking series of connectors and assemblies. This series is ideal for devices where front panel space is at a premium and reliability is critical.

It's lightweight construction is perfect for handheld and portable equipment applications.

Excellent characteristics make it well suited for medical, industrial, sensor and computer equipment applications.



Features:

Snap locking design with robust retention

Very small size

Low cost

High reliability

Gold plated contacts provide excellent contact resistance

3, 4 or 5 contacts in one shell size

PCB and Panel mountable

Female insulators available in black, green, red, brown, orange & blue

Lightweight, durable construction

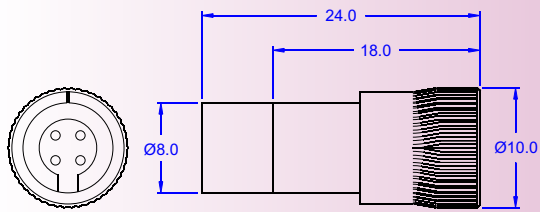
Custom molded cable assemblies can meet your specific designs.

Alpha Products, Inc.

Alpha Center, 351 Irving Dr., Oxnard, CA 93030, USA

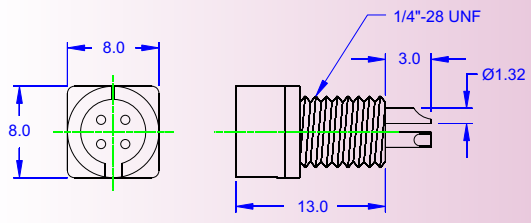
Tel: 805-981-8666 Fax: 805-988-6555 www.alpha-products.com info@alpha-products.com

Male connector, cable mount, w/strain relief



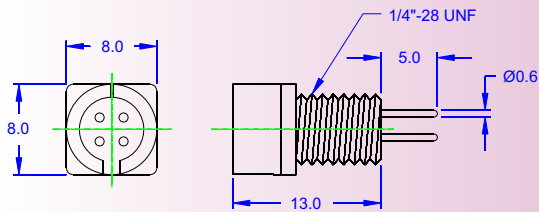
PART NUMBER	# OF CONTACTS	MAX CABLE DIAMETER
300/231C1089830	3	4.0mm
300/231C1089840	4	4.0mm
300/231C1089850	5	5.0mm

Male socket, solder type



PART NUMBER	# OF CONTACTS
300/231C1090130	3
300/231C1090140	4
300/231C1090150	5

Male socket, dip solder type



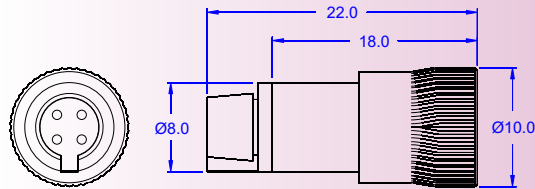
PART NUMBER	# OF CONTACTS
300/231C1090230	3
300/231C1090240	4
300/231C1090250	5

Alpha Products, Inc.

Alpha Center, 351 Irving Dr., Oxnard, CA 93030, USA

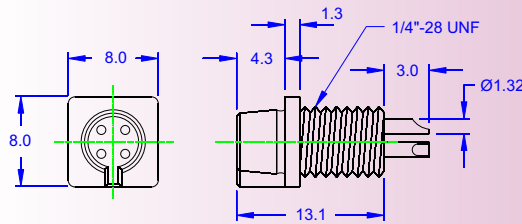
Tel: 805-981-8666 Fax: 805-988-6555 www.alpha-products.com info@alpha-products.com

Female connector, cable mount, w/strain relief



PART NUMBER	# OF CONTACTS	MAX CABLE DIAMETER
300/231C1090030	3	4.0mm
300/231C1090040	4	4.0mm
300/231C1090050	5	5.0mm

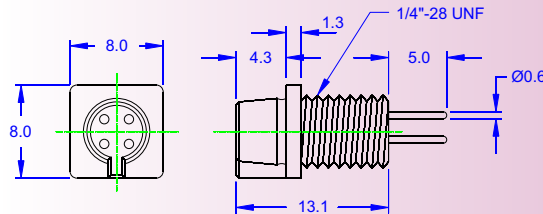
Female socket, solder type



PART NUMBER	# OF CONTACTS
300/231M109033X	3
300/231M109034X	4
300/231M109035X	5

Note: "X" means color code.
 0 = black 3 = orange
 1 = red 4 = brown
 2 = green 5 = blue

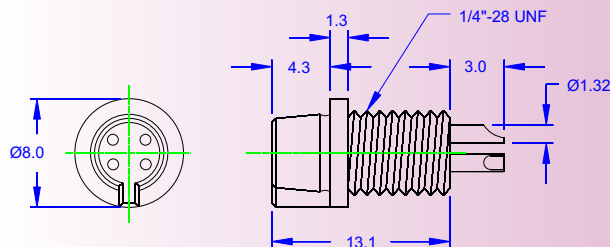
Female socket, dip solder type



PART NUMBER	# OF CONTACTS
300/231M109043X	3
300/231M109044X	4
300/231M109045X	5

Note: "X" means color code.
 0 = black 3 = orange
 1 = red 4 = brown
 2 = green 5 = blue

Female socket, solder type, for overmolding



PART NUMBER	# OF CONTACTS
300/CC0746X0	3
300/CC0747X0	4
300/CC0748X0	5

Note: "X" means color code.
 0 = black 3 = orange
 1 = red 4 = brown
 2 = green 5 = blue

Alpha Products, Inc.

Alpha Center, 351 Irving Dr., Oxnard, CA 93030, USA

Tel: 805-981-8666 Fax: 805-988-6555 www.alpha-products.com info@alpha-products.com

SPECIFICATIONS

Number of contacts	: 3, 4 and 5
Locking	: Snap-in
Termination	: Solder and dip solder
Wire AWG	: 24 AWG max
Cable outlet	: 3.6 ~ 5.0 mm
Shell protection	: IP40
Operating temperature	: -25°C ~ +70°C
Rated voltage	: 60V
Rated current	: 3A
Contact resistance	: 3mOhm max
Insulation resistance	: 10MOhm min

Material

Male contact	: Brass, gold plated
Female contact	: Phosphor Bronze, gold plated
Body	: Pa12, UL94 HB
Life cycle	: 100 matings min



Alpha Products, Inc.

Alpha Center, 351 Irving Dr., Oxnard, CA 93030, USA

Tel: 805-981-8666 Fax: 805-988-6555 www.alpha-products.com info@alpha-products.com